

WELCOME TO

THINK

&  
Paint

CURATED BY  
JEFF KINZ

FOUNDER OF T&P  
EMCEE AND VISUAL ARTIST

# Peace Painters!

Today, we will be a gathering for conscious conversation and art creation. With guided prompts to make you think and a blank canvas for you to paint, Think & Paint encourages you to exchange unique and intimate life perspectives, both visually and verbally.

Don't forget to share your painting with us on social media!

**Thank you for joining our community!**  
**We affirm you will have an enlightening experience.**



# THE ART ELEMENT OF SPACE AND POSITIVELY INFLUENCING YOUR ENVIRONMENT

We invite you to make yourself comfortable and create a safe space together. After setting up your canvas and paint, please review this packet to get you thinking.



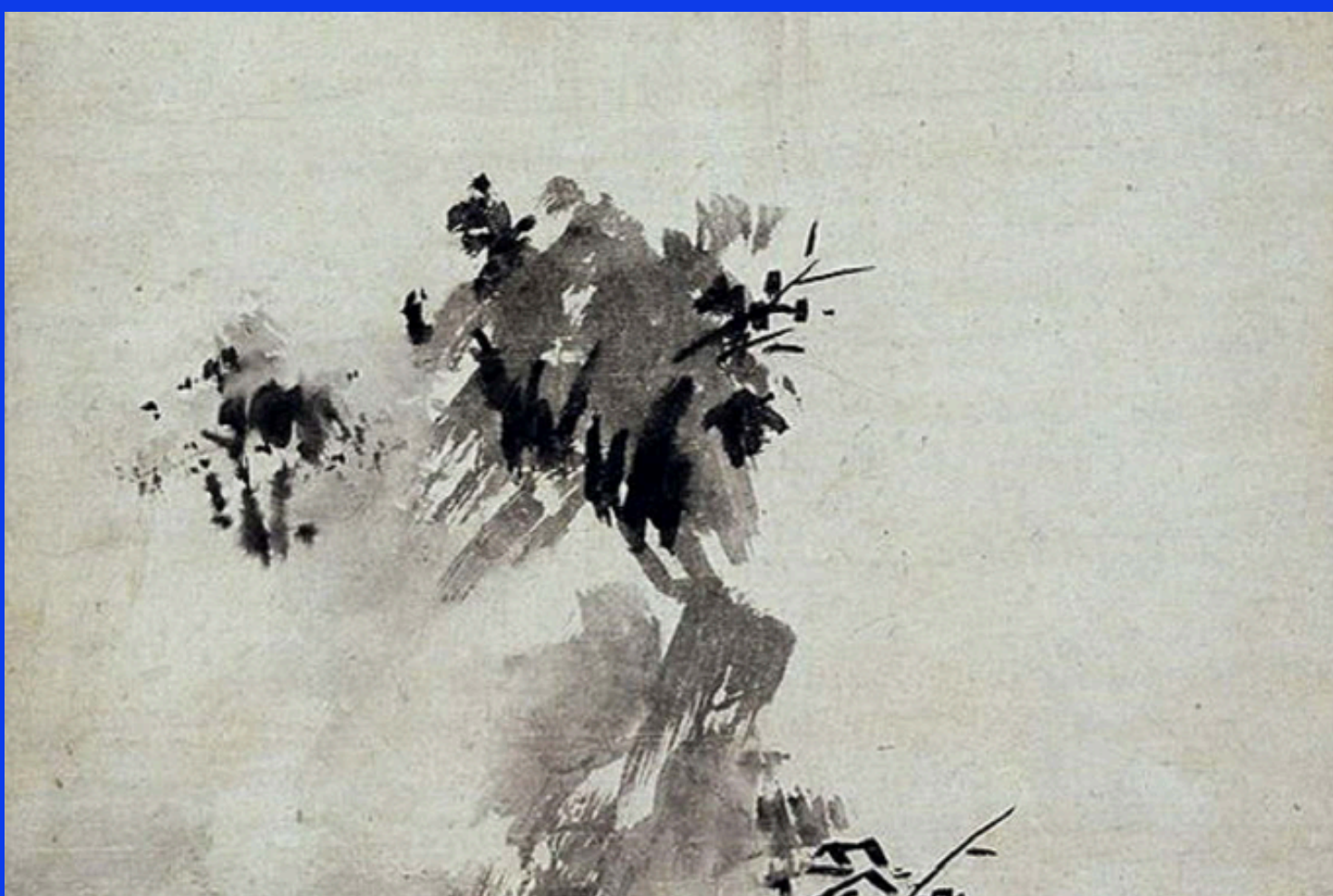
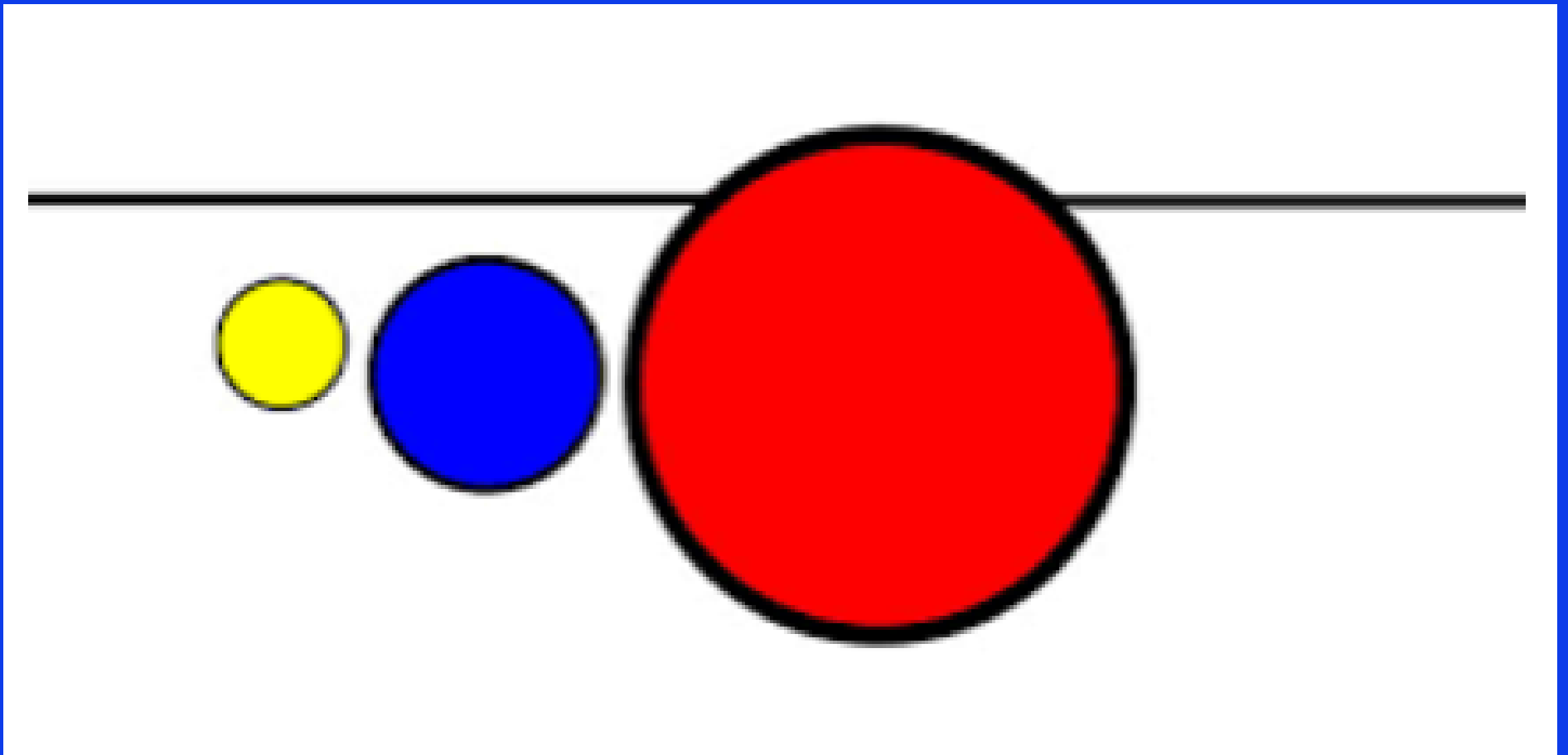


## **What is Space?**

In art, space is the area around, between, and within the shapes and forms of a piece. It's a fundamental element of art that's important for defining the height, width, and depth of objects, and for creating cohesive compositions.



# Examples of Perspective



# **Finding Healthy Ways To Positively Influence Your Environment**

**What is the first thing that  
comes to mind when you think  
about your connection to your  
environment ?**

**What are some ways you  
practice staying present when  
you're out and about and have  
a lot on your mind?**

**Why is it important to  
understand how you feel  
before leaving your house to  
go interact with the world ?**



**Why do you think getting involved in community can be difficult at times?**

**Where is the space you feel the safest and why?**

**How can storytelling be visually represented in your community to enhance its character and beauty ?**

**If you had the power to add or subtract anything you wanted in your environment what would it be ?**



**What are some healthy practices you can implement in your daily routine to help you “show up” when you don’t have the capacity ?**

**Going back to childhood, when was the first time you realized you had an impact on your environment/community ?**

**In the next 5 years, how do you want to influence your community ?**





**SHARE YOUR  
ARTWORK!**



**@\_ThinkandPaint**

**@\_JEFFKOONZ**



# JEFF K%NZ ART

## PRICE LIST

### CANVAS

8X10	\$100
16X20	\$250
24X30	\$350
3FT X3FT	\$500
5FT X 5FT	\$800
OVER SIZE	\$1000+

4X6	\$12
5X7	\$15
6X8	\$20
6X10	\$25
11X14	\$35
13X19	\$50

### PRINTS

### MURALS

5FT X 8FT	\$1000
8FT X 14FT	\$1500
14FT X 20FT	\$2000

SUBMIT INQUIRIES VIA [THINKANDPAINTGR8@GMAIL.COM](mailto:THINKANDPAINTGR8@GMAIL.COM)